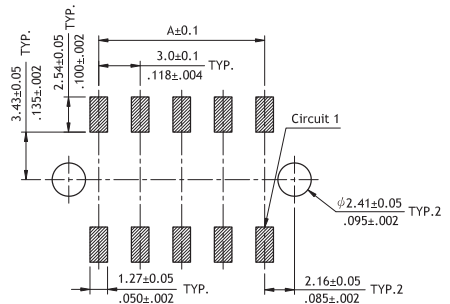
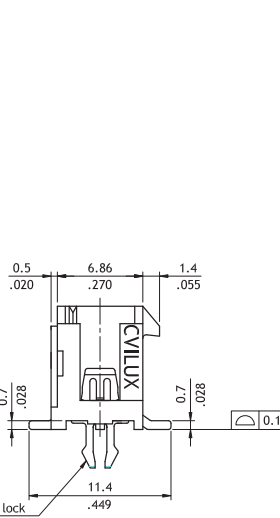
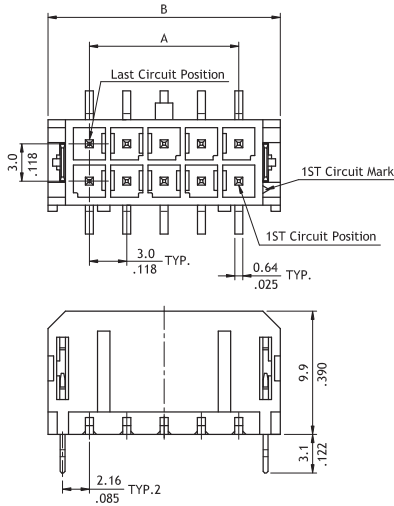
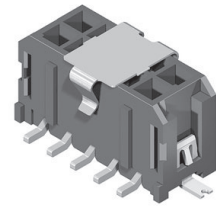
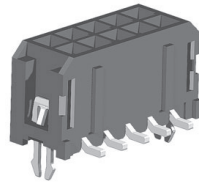


# CP35 Series 3.00mm(.118") Dual Row Top Entry SMT Headers

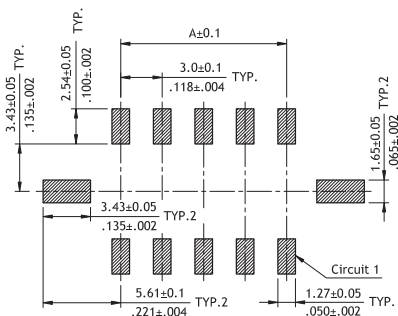
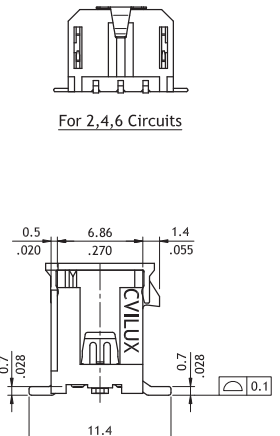
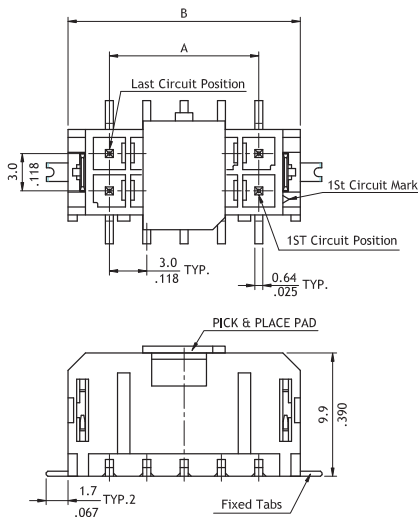
- ⊙ Mate with CP35 Connector
- ⊙ Shrouded header with board locks or fixed tabs
- ⊙ With metal pick and place Pad
- ⊙ High temperature plastic for SMT process

RoHS Compliant



Recommended PCB Layout

Circuits	Dimension	
	A	B
2	—	6.7(.264)
4	3.0(.118)	9.7(.382)
6	6.0(.236)	12.7(.500)
8	9.0(.354)	15.7(.618)
10	12.0(.472)	18.7(.657)
12	15.0(.591)	21.7(.854)
14	18.0(.709)	24.7(.972)
16	21.0(.827)	27.7(1.091)
18	24.0(.945)	30.7(1.209)
20	27.0(1.063)	33.7(1.327)
22	30.0(1.181)	36.7(1.445)
24	33.0(1.299)	39.7(1.563)



Recommended PCB Layout

## Ordering Code

① CP ② 35 ③ 24 ④ P ⑤ 1 ⑥ V S ⑦ 0 - ⑧ NH

- ① Series No.
- ② No. of Circuits: 02 to 24
- ③ P = Plug
- ④ Plating: 1 = Matte Tin over Nickel  
\*Optional plating available but MOQ requested
- ⑤ Contact Type: V = Top Entry
- ⑥ Mount Type: S = SMT Type

- ⑦ Other Options:  
0 = With Metal board lock (Standard)  
T = With Fixed Tabs  
(Available for Tape & Reel packing)
- ⑧ Process: -LF = For Lead Free soldering process  
NH = For Lead Free soldering process and Halogen-Free