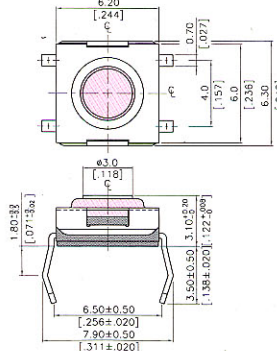
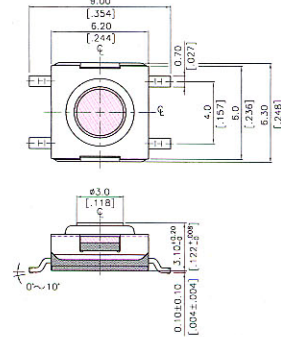


DIMENSIONS

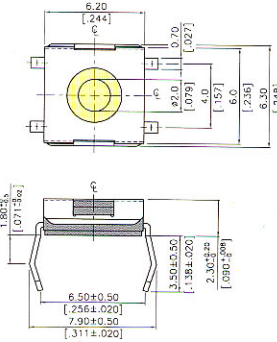
DTSHW-66



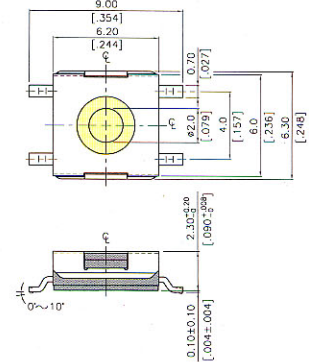
DTSMW-66



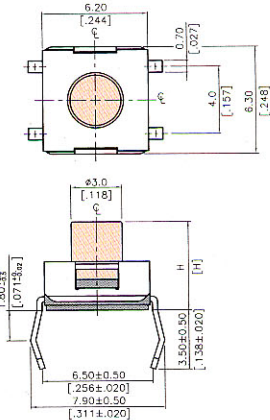
DTSHW-68



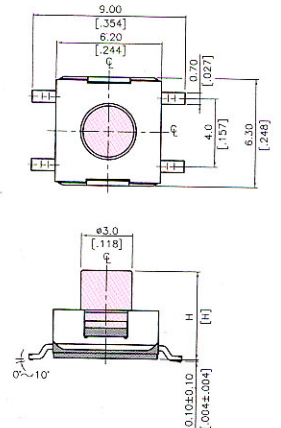
DTSMW-68



DTSHW-69, 67, 65



DTSMW-69, 67, 65



FEATURES

1. Available sharp click feel with a positive tactile feedback. Due to small movement distance (stroke), user experiences distinct sensation when the switch clicks into place.
2. Ultraminiature and light weight structure suitable for high density mounting. Economic but high reliability.
3. Insert molding in the contact with special treatment prevents flux build-up during soldering and permits auto-dipping.
4. Seal characteristics:
 - a. The washable type switches are designed to allow submersed washing after soldering.
 - b. When washing the washable type switches, do it after returning the switches back to the normal temperature.

MATERIALS

- △COVER: Stainless Steel.
- △CONTACT DISC: Phosphor bronze with silver cladding.
- △TERMINAL: Brass with silver cladding.
- △BASE: UL94V-0 PPA High-Temp. Thermoplastic.
Color: Black.

ITEM NO.	DTSMW-66N DTSHW-66N	DTSMW-68S DTSHW-68S	DTS(H)MW-69, 67, 65N (R)
STEM	High-Temp. Thermoplastic Nylon UL 94V-0 Color: Brown(N), 160gf	None	None
ADHESIVE TAPE	Resin-based	Resin-Based	None
METAL STEM	Brass with Nickel plated	Brass with Nickel Plated Color: Silver (S), 160gf	None
SEALED RUBBER	None	None	Silicone Rubber