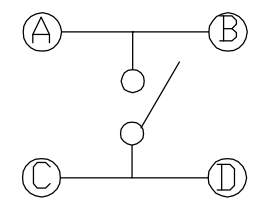
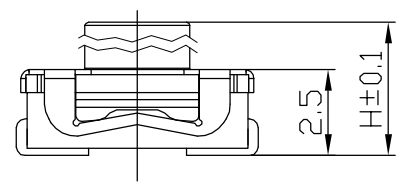
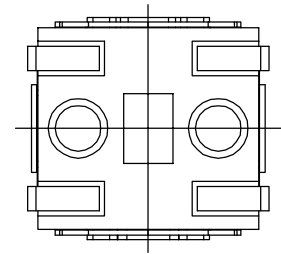
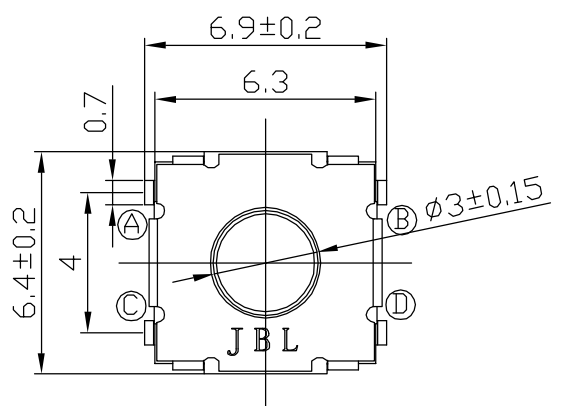


CAD FILE:

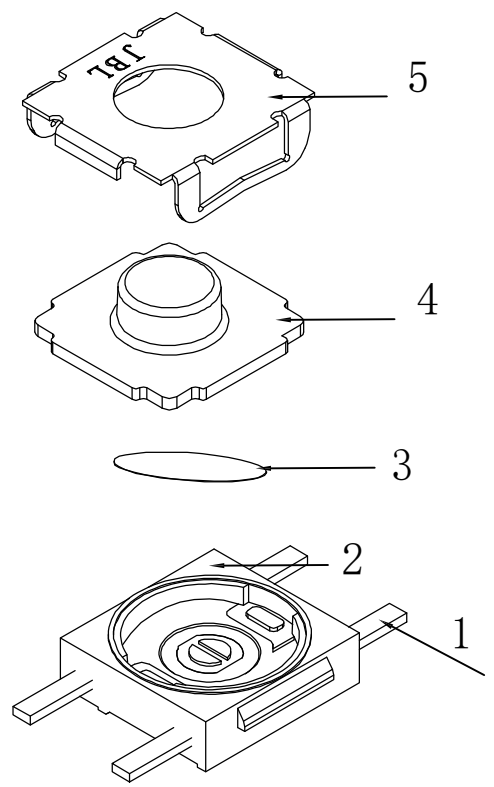
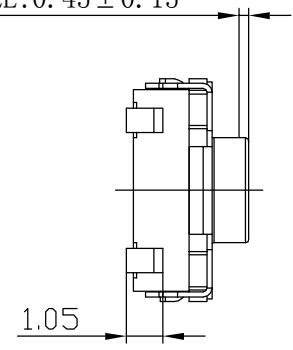
序号	H
1	3.5mm
2	5.0mm



SCHEMATIC



TRAVEL: 0.45 ± 0.15



1. ELECTRICAL CHARACTERISTICS:

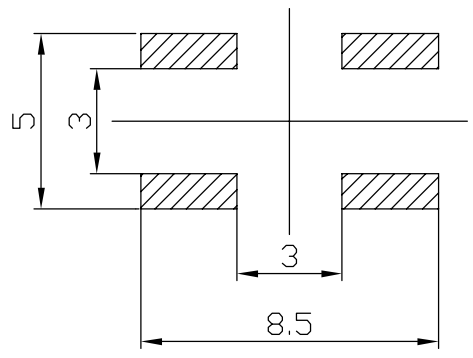
- 1.1. RATING: DC 12V 50mA
- 1.2. CONTACT RESISTANCE: 100mΩ MAX
- 1.3. INSULATION RESISTANCE: 100MΩ MIN
- 1.4. GENERAL TOLERANCE: ±0.3
- 1.5. DIELECTRIC STRENGTH: AC 250V(50~60Hz)/60S

2. MECHANICAL CHARACTERISTICS:

- 2.1. PRACTICAL TEMPERATURE RANG: -40℃~+85℃
- 2.2. OPERATING FORCE: 80±30gf □
 - 100±30gf □
 - 120±30gf □
 - 160±40gf □
 - 200±50gf □
 - 250±50gf □
 - 300±60gf □
 - 400±60gf □

2.3. MECHANICAL LIFE: 200,000 cycles

2.4. Salt Mist (ASS) Duration: 32hours



P. C. B LAYOUT

8					TOLERANCE UNLESS SPECIFIED				
7					WITHIN 1.5:±0.1mm				
6					OVER 1.5: ±0.2mm				
5	COVER	SUS	1	NATURAL	ISSUE	DATE	DESCRIPTIONS		APPD.
4	KNOB	RUBBER	1	BLUE	TITLE:TACT SWITCH		UNIT:mm	DRWG. NO.:	
3	CONTACT	SUS	1	Ag PLATED	MODEL NO:TSF-062XX-XXX		SCALE:4:1	DWN	
2	BASE	PPA	1	BLACK	DONGGUAN JINBAOLI ELECTRONICS CO.,LTD XIAMEN JINBEILI ELECTRONICS CO.,LTD		CHK'D		
1	TERMINAL	C2680-H T0.3	2	Ag PLATED			APPD.		
NO.	DESCRIPTION	MATERIAL	QTY	PLATING					